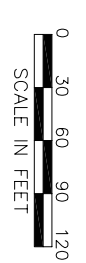
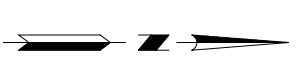
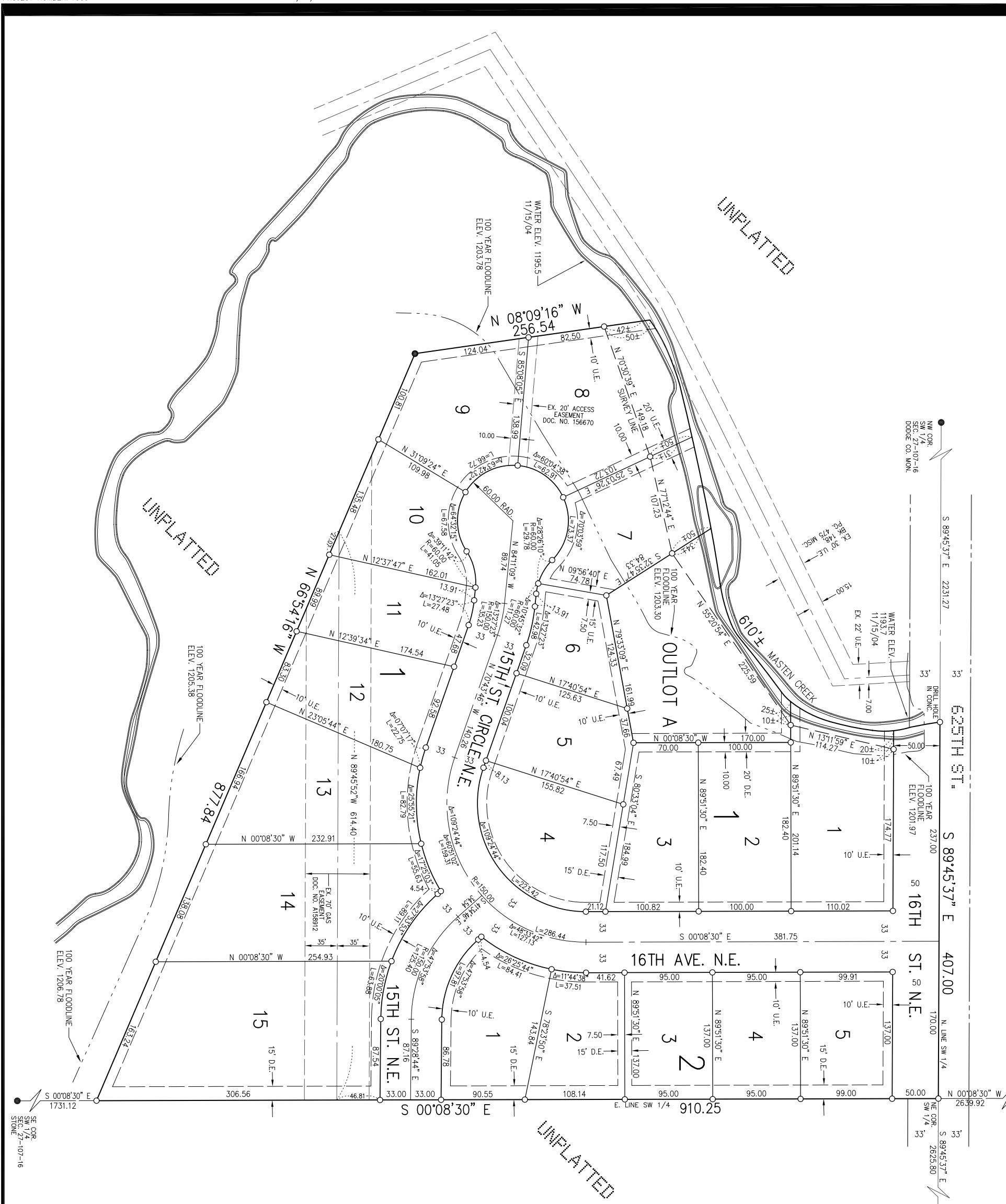


MASTEN CREEK WOODLANDS



- MONUMENTS**
- SET (5/8" PIPE UNLESS NOTED OTHERWISE)
 - FOUND MONUMENTS (AS NOTED)
- All monuments set have a plastic cap stamped L.S. 41814.

UTILITY EASEMENT DEFINED
 An unobstructed easement for the construction and maintenance of all necessary overhead, underground or surface public utilities, including rights to conduct drainage and trimming on said easement.
 U.E. = UTILITY EASEMENT
 EX. U.E. = EXISTING PLATTED UTILITY EASEMENT

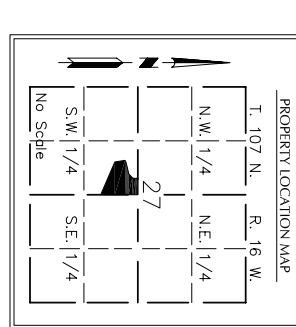
DRAINAGE EASEMENT DEFINED
 An unobstructed easement for the construction and maintenance of underground and surface drainage facilities and utility easement.
 D.E. = DRAINAGE EASEMENT

BEARINGS
 Bearings are on the Dodge County Coordinate System, NAD 83, Adjusted 1996.

BENCH MARK
 Control point Kasson RM at NE corner intersection 16th St. N.E. and Monteville Ave. S.W. E1. 1248.77

VERTICAL CONTROL
 Elevations on this plan are based on the National Geodetic Vertical Datum of 1929.

A utility and drainage easement is granted over all of Outlot A.



MASSEY
LAND SURVEYING & ENGINEERING
 P.O. BOX 428, KASSON, MN 55944
 PH. NO. 507-634-4505, FAX NO. 507-634-6580